



Carbon footprint equivalences



We stand out for being a reference in tracking the **Water and carbon footprint** of our products, to mitigate its impact on water and greenhouse-phase gases (GHG) by increasing energetic and hydric efficiency.



At **Rotoplas** we implement projects to create and share economic, social and environmental value.



At **Rotoplas** we know that the global CO₂ emissions and the planet's temperature rising will have consequences in more frequent extraordinary weather events, generating within great damage to ecosystems and people.

For this reason, Rotoplas is working on its **Climate Change Strategy**, through which we allow our stakeholders, to mitigate and adapt to the risks derived from climate change.

This comparison of the **Carbon footprint** of our top 5 solutions, with other products, is one of the actions of the **Climate Change Strategy**.

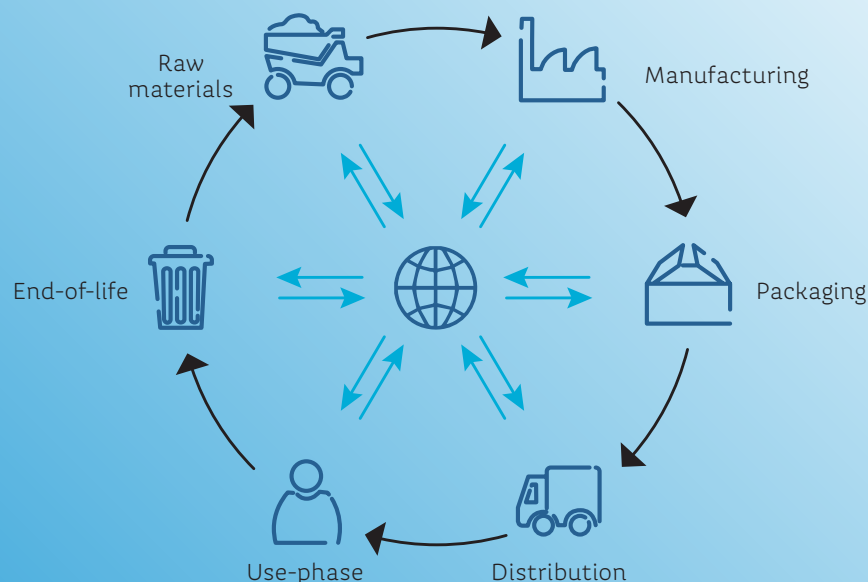


What is the Carbon footprint?

It is an analysis that tells us how much is the total of Carbon Dioxide equivalent (CO₂ eq.) emitted during **the different stages of the life of a product**, not only in its production phase.

To measure it, we rely on the international standard ISO 14067.

Stages of product life-cycle studied



Carbon footprint equivalences:

During its use-phaseful life, a **10 000 L Water Tank** emits the equivalent in CO₂ to 1.77 laptops.



619 kg of CO₂ eq.

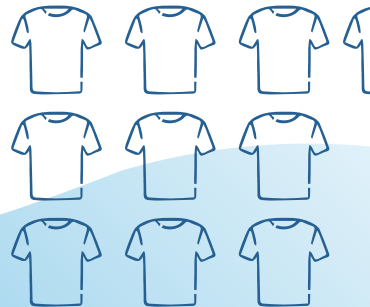


1 laptop generates
350 kg of CO₂ eq.

During its use-phaseful life, a a three-layer **1100 L Water Tank** emits the equivalent in CO₂ than 9.2 t-shirts.



101.6 kg of CO₂ eq.



One t-shirt produces
11 kg of CO₂ eq.

During its lifetime, a **5 000 L Water Tank** generates the carbon emissions equivalent to 1.23 flat screens (34-37 in).



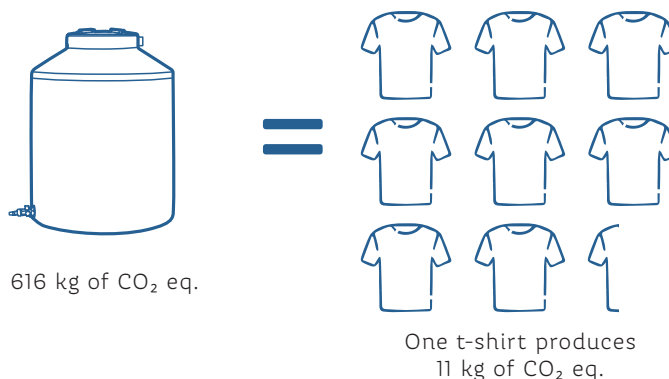
329.5 kg of CO₂ eq.



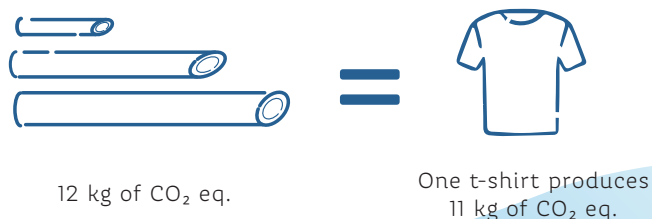
A flat screen generates
269 kg of CO₂ eq.

Carbon footprint equivalences:

During its use-phaseful life, a three-layer **750 L Water Tank** emits the equivalent in CO₂ than 8.13 shirts.



During the use-phaseful life, **20 m 25 mm Class 16 pipe** emits the CO₂ equivalent of a shirt.



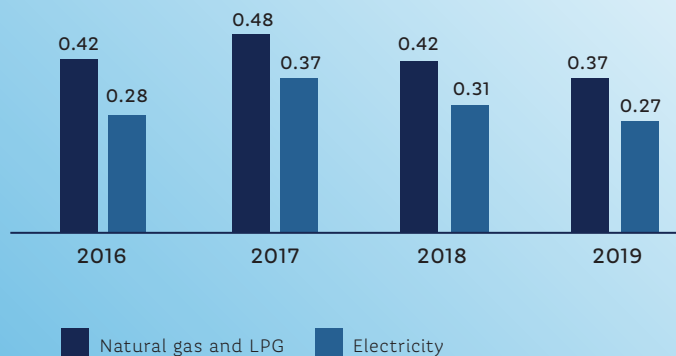
Initiatives and results

At Rotoplas we carry out various initiatives to reduce the impact on the carbon footprint of our products, particularly during the manufacturing stage in our plants.

Some projects are:

- Installation of photovoltaic panels
- Use-phase of recycled resins
- Burner replacement and cleaning
- Introduction of new technologies
- Gas substitution in processes

Thanks to these initiatives, we have reduced our intensity of CO₂ emissions.



This report represents a synthesis of the full carbon and water footprint study reports based on the ISO 14046:2014, and ISO 14067:2013 standards; made by Grupo Rotoplas for a selection of its products. For more information, contact: sustentabilidad@rotoplas.com